

# Read Me!

Print this guide and take it with you. Some of these locations will be in areas with little to no cell coverage. You may not be able to access the website to look at the picture or description.

Your picture must include the object described in the guide along with your bike and your flag. Your flag number must be readable in the picture.

You and you alone are responsible for your own personal safety. Plan your ride and ride your plan.

Some of these locations are going to be impacted by snow and ice early in the season. No allowance will be made for early season rides that result in not being able to access a location due to weather. You can go back later in the season. Again, plan your ride.

We have worked hard to make sure there is a paved road to each location. There will almost certainly be other unpaved options nearby. Some of the roads may be narrow winding mountain roads. There may be frost heaves in spots. Some of the best riding in the PNW requires you to leave the interstate to explore. You are responsible for planning your route to avoid areas that are not within your comfort zone.

# Seriously, go back and read the first page.

Why the “snarky” intro? Every year we have riders that go in search of a site without referencing the guide. This guide has EVERYTHING you need to be successful on this adventure. There is a description of the object, a sample picture so you know what to look for and GPS coordinates that will put you at the correct location. If you visit a location and decide to take a picture of something you think is more interesting, you may be sad.

We don't require you to match the sample image exactly in this rally. In fact, we are quite lenient. But you must include enough of the object described and shown in the sample image so that we know you are in the correct spot.

Now go have some fun!

2025 PNWGT Destination List

**GT01 – Ripplebrook Store (Oregon)**

GPS: N45.07898, W122.05275

Elevation: 1,532 Feet

**Criteria**

**Take a picture of the Ripplebrook Store with your bike and rally flag in the picture.**

**Notes**

Ripplebrook is located on a nice little section of OR-224 between Estacada and Detroit.



**GT02 – Fort Rock Cemetery (Oregon)**

GPS: N43.37072, W121.06363

Elevation: 4,334 Feet

**Criteria**

**Take a picture of the Fort Rock Cemetery sign in the parking area with your bike and flag in the picture.**

**Notes**

It's flat out here. Pretty much everywhere...except for this really cool rock formation that seems to rise out of nothing.

Suggested by Darren D.



**GT03 – Oasis Cafe (Oregon)**

GPS: 43.74523, -118.08024

Elevation: 2,972 Feet

**Criteria**

**Take a picture of the Oasis Store with your bike and flag in the picture.**

**Notes**

US-20 between Burns and Vale is a great section of motorcycle road with fantastic views.



## 2025 PNWGT Destination List

### GT04 – Hayden Covered Bridge (Oregon)

GPS: N44.38333, W123.63081

Elevation: 266 Feet

**Criteria**

**Take a picture of the Hayden Covered Bridge with your bike and flag in the picture.**

**Notes**

There are so many good riding roads between I-5 and the coast, we could do an entire year just on that section of Oregon. OR-34 between Corvallis and Waldport is just one of them!



GT04 - Hayden Covered Bridge

### GT05 – Remote Post Office (Oregon)

GPS: N43.00318, W123.88677

Elevation: 246 Feet

**Criteria**

**Take a picture of the Remote Post Office with your bike and flag in the picture.**

**Notes**

Another great ride between the valley and the coast along OR-42.



GT05 - Remote Post Office

### GT06 – Imnaha Post Office (Oregon)

GPS: N45.55945, W116.83349

Elevation: 1,991 Feet

**Criteria**

**Take a picture of the Imnaha Post Office with your bike and flag in the picture.**

**Notes**

Imnaha is in the vicinity of Hells Canyon. Check your route carefully as there are many dirt forestry service roads in the area. For the dual sport riders...you're welcome ☺

Suggested by Ken T.



GT06 - Imnaha Post Office

2025 PNWGT Destination List

**GT07 – Meadow Creek Bridge (Oregon)**

GPS: N45.26433, W118.37704

Elevation: 3,314 Feet

**Criteria**  
 Take a picture of the Meadow Creek Bridge with your bike and flag in the picture.

**Notes**  
 There isn't much out here in the way of civilization...which is kind of what makes it so peaceful and enjoyable. OR-244 between Hilgard and Ukiah is a nice section of road.



GT07 - Meadow Creek Bridge

**GT08 – Cottonwood Canyon State Park (Oregon)**

GPS: N45.47905, W120.46535

Elevation: 561 Feet

**Criteria**  
 Take a picture of the Cottonwood Canyon Welcome sign with your bike and flag in the picture.

**Notes**  
 Randall and I separately scouted this area - I was stonewalled by road construction while there but it is so beautiful, it needed to be added to our ride.



GT08 - Cottonwood Canyon State Park

**GT09 – 49 North Ski Area (Washington)**

GPS: N48.3055, W117.55848

Elevation: 3,796 Feet

**Criteria**  
 Take a picture of the 49 North Ski Area sign with your bike and flag in the picture.

**Notes**  
 Some of you have known about Flowery Trail Road for years and kept it to yourselves. Not fair!



GT09 - 49 North Ski Area

**GT10 – Scenic Beach State Park (Washington)**

GPS: N47.64626, W122.84688

Elevation: 174 Feet

**Criteria**

**Take a picture of the Scenic Beach State Park sign with your bike and flag in the picture.**

**Notes**

Located on Kitsap Peninsula (our first stop in this county), a nice little drive along Hood Canal takes you past Seabeck to this small park. Stop along the canal if the tide is out for a good Eagle show, stop at Seabeck Pizza for a slice of good pizza.



GT10 - Scenic Beach State Park

**GT11 – Dry Falls Vista (Washington)**

GPS: N47.60689, W119.36421

Elevation: 1,519 Feet

**Criteria**

**Take a picture of the “Story of Dry Falls” sign in the parking area with your bike and flag in the picture.**

**Notes**

WA-17 is short, scenic route between Coulee City and Soap Lake with lots of pop! Stop and enjoy the scenery for a bit at this stop.



GT11 - Dry Falls Vista

**GT12 – Cedar Creek Covered Bridge (Washington)**

GPS: N45.93837, W122.58366

Elevation: 259 Feet

**Criteria**

**Take a picture of the Cedar Creek Covered Bridge (either side) with your bike and flag in the picture.**

**Notes**

A cool little ride outside of Woodland with a nice covered bridge and grist mill.



GT12 - Cedar Creek Covered Bridge

2025 PNWGT Destination List

**GT13 – Mora Ranger Station (Washington)**

GPS: N47.91821, W124.60259

Elevation: 115 Feet

**Criteria**  
 Take a picture of the Mora Ranger Station sign with your bike and flag in the picture.

**Notes**  
 You won't get much farther northwest in Washington without paying a fee...go all the way out to Rialto beach for some impressive coast scenery.



GT13 - Mora Ranger Station

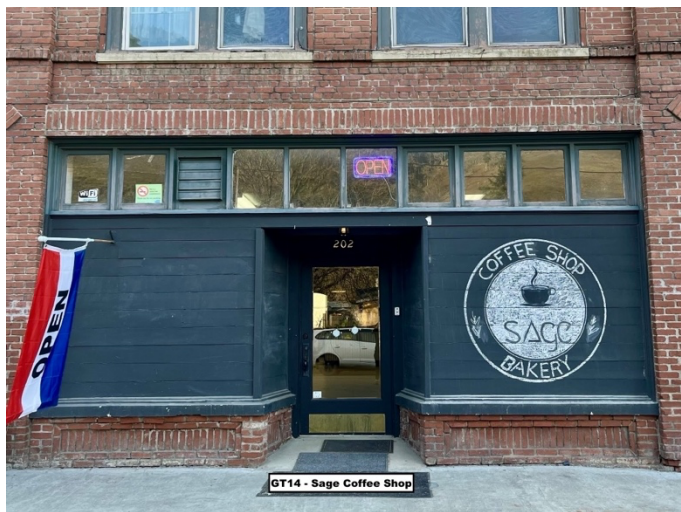
**GT14 – Sage Coffee Shop (Washington)**

GPS: N45.81611, W121.15228

Elevation: 453 Feet

**Criteria**  
 Take a picture of the Sage Coffee Shop with your bike and flag in the picture. You may have to take the picture from across the street.

**Notes**  
 WA-142 through Klickitat is a really fun ride a little north of the Columbia River Gorge. Stop for a treat or lunch in the shop, they make great food! There is a section of 1 (and a half) lane road east of Klickitat.



GT14 - Sage Coffee Shop

**GT15 – Bluewood Ski Area (Washington)**

GPS: N46.09144, W117.85341

Elevation: 4,406 Feet

**Criteria**  
 Take a picture of the Bluewood Ski Area sign with your bike and flag in the picture.

**Notes**  
 Paved all the way from Dayton, unknown status south of the sign. I was surprised to find a ski area in this area of southeast Washington, but it was a good ride and has good scenery ☺



GT15 - Bluewood Ski Area

2025 PNWGT Destination List

**GT16 – Not Doug’s Country Kitchen (Washington)**

GPS: N48.55933, W119.02501

Elevation: 2,556 Feet

**Criteria**

**Take a picture of Not Doug’s Country Kitchen with your bike and flag in the picture!**

**Notes**

A fun area to ride! “Not Doug’s” may be a seasonal business or could be entirely shut down – Google was of limited use on the topic.



GT16 - Not Doug's

**GT17 – Boulder Creek Bridge (Idaho)**

- GPS: N48.59794, W116.09286

Elevation: 2,575 Feet

**Criteria**

**Take a picture of the Boulder Creek bridge with your bike and flag in the picture.**

**Notes**

A fun, twisty ride out of Bonners Ferry. The paved road ends at the bridge, but if you are adventurous and want to explore a ghost town, go another mile or so on the dirt after the bridge.

Suggested by Brandon C.



GT17 - Boulder Creek Bridge

**GT18 – Dog Bark Park (Idaho)**

GPS: N46.057222, W116.345083

Elevation: 3,570 Feet

**Criteria**

**Take a picture of the giant dog at Dog Bark Park Inn with your bike and flag in the picture.**

**Notes**

Every time I ride past this thing on US-95 I have to pull over and chuckle...and maybe take a picture.

Suggested by Dale W.



GT18 - Dog Bark Park



2025 PNWGT Destination List

**GT19 – Lolo Pass Visitor Center (Idaho)**

GPS: N46.634660, W114.577810

Elevation: 5,225 Feet

**Criteria**

**Take a picture of the Lolo Pass Visitor Center with your bike and flag in the picture.**

**Notes**

Lolo Pass is one of the iconic rides through the PNW and could easily be included every year without regret. If you haven't been on US-12 through Idaho, do it!

Suggested by Dale W.



**GT20 – Idaho City Veterans Memorial (Idaho)**

GPS: N43.827730, W115.833140

Elevation: 3,904 Feet

**Criteria**

**Take a picture of veterans memorial in Idaho City with your bike and flag in the picture.**

**Notes**

Another trip up ID-21 doesn't seem like much of a bad deal at all! And there's ice cream up there somewhere, I just don't remember where.

Suggested by Ken T.



**GT21 – The Devil Boat (Idaho)**

GPS: N43.634170, W113.296600

Elevation: 5,325 Feet

**Criteria**

**Take a picture of the Devil Boat (submarine sail) with your bike and flag in the picture.**

**Notes**

Arco is a long way from anything else and might seem like a strange place for a submarine memorial of this magnitude, but it is the birthplace of modern-day nuclear power and a hotbed of nuclear operator training for the Navy for decades.



2025 PNWGT Destination List

**GT22 – Magic Mountain Resort (Idaho)**

GPS: N42.18944, W114.28587

Elevation: 6,736 Feet

**Criteria**  
Take a picture of the Magic Mountain Resort sign with your bike and flag in the picture.

**Notes**  
It looks close to GT23, but it's really not. **Note – park across the street from the sign to get your picture.**



**GT23 – Mount Harrison Lookout (Idaho)**

GPS: N42.30919, W113.65899

Elevation: 9,239 Feet

**Criteria**  
Take a picture of the Lookout tower at the Mount Harrison Lookout with your bike and flag in the picture.

**Notes**  
This may be the highest elevation location in the history of the rally, and isn't likely to be matched anytime soon. And the views are spectacular. Although, you likely won't be visiting this one on April 1<sup>st</sup>...



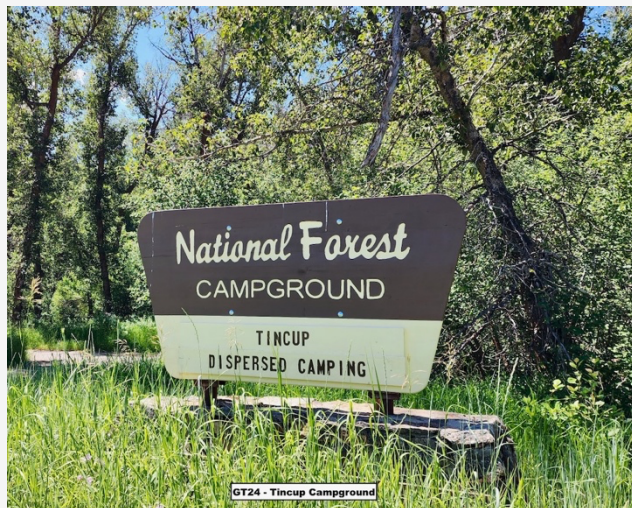
**GT24 – Tincup Campground (Idaho)**

GPS: N43.00496, W111.10241

Elevation: 5,853 Feet

**Criteria**  
Take a picture of the Tincup Campground sign with your bike and flag in the picture.

**Notes**  
Go east, maybe you'll find Kevin Costner at this campground...



2025 PNWGT Destination List

**GT25 – Lookout Blacksmith Shop (California)**

GPS: N41.20807, W121.14976

Elevation: 4,163 Feet

**Criteria**

**Take a picture of the Lookout Blacksmith Shop with your bike and flag in the picture.**

**Notes**

A nice ride east of Mt Shasta.

Suggested by Brandon C.



GT25 - Lookout Blacksmith Shop

**GT26 – The Peg House (California)**

GPS: N39.878207, W123.727904

Elevation: 906 Feet

**Criteria**

**Take a picture of the Peg House sign with your bike and flag in the picture.**

**Notes**

The Peg House is a cool little stop along US-101 and pairs nicely with GT27. Good food, outdoor seating and you might get treated to some live music, too.

Suggested by Bryan B.



GT26 - The Peg House

**GT27 – Mendocino Post Office (California)**

GPS: N39.30606, W123.80027

Elevation: 115 Feet

**Criteria**

**Take a picture of the post office in Mendocino with your bike and flag in the picture.**

**Notes**

You knew it was coming eventually...a trip to the northern California coast on CA-1. Enjoy the ride and grab some lunch. And remember, even if it's 100F on US-101, you will need layers when you reach the coast!



GT27 - Mendocino Post Office

2025 PNWGT Destination List

**GT28 – Big Sky Fire Department (Montana)**

GPS: N45.29268, W111.395080

Elevation: 7,497 Feet

**Criteria**  
 Take a picture of the **Big Sky Fire Department** with your bike and flag in the picture. Do NOT block the driveway, please.

**Notes**  
 Big Sky is legendary for its scenic beauty and you will not be disappointed if you make it out here. It will not (likely) be open to motorcycles early in the riding season due to the elevation, and weather can change quickly in this part of Montana.



GT28 - Big Sky Fire Department

**GT29 – Clearwater Bull (Montana)**

GPS: N47.002917, W113.371417

Elevation: 3,842 Feet

**Criteria**  
 Take a picture of the **Clearwater Bull** with your bike and flag in the picture.

**Notes**  
 This landmark is located near a Sinclair gas station at the junction of several pretty good Montana roads!



GT29 - Clearwater Bull

**GT30 – Glacier Wilderness Resort (Montana)**

GPS: N48.451306, W113.818444

Elevation: 3,340 Feet

**Criteria**  
 Take a picture of the **Glacier Wilderness Resort** sign with your bike and flag in the picture.

**Notes**  
 Go north...and east past the park on US-2 and you will find some peace and quiet from the National Park crowds. This sign is at the entrance to the property on US-2 (NOT the similar sign inside the compound).



GT30 - Glacier Wilderness Resort

2025 PNWGT Destination List

**GT31 – Kilowatt Sculpture (British Columbia)**

GPS: N50.682640, W121.932290

Elevation: 712 Feet

**Criteria**

**Take a picture of the Kilowatt Sculpture with your bike and flag in the picture.**

**Notes**

All the roads to the town of Lillooet are great. In particular, HWY 99 continues to Vancouver and is known as the Sea to Sky Highway – not to be missed! If you go east to Cache Creek, plan a stop at Hungry Herbies Drive-In for a great burger!

Suggested by Gary J.



GT31 - Kilowatt Sculpture

**GT32 – Gray Creek Store (British Columbia)**

GPS: N49.626167, W116.787889

Elevation: 1,831 Feet

**Criteria**

**Take a picture of the Gray Creek Store with your bike and flag in the picture.**

**Notes**

The Kootenay area is some of the best riding in BC, or so I am told ☺

Suggested by Gary J.



GT32 - Gray Creek Store

**GT33 – Alpine Meadows Sign (British Columbia)**

GPS: N49.070630, W120.763870

Elevation: 5,492 Feet

**Criteria**

**Take a picture of the Alpine Meadows sign with your bike and flag in the picture.**

**Notes**

This sign is located at the Cascade Lookout on Blackwall Rd. The view from the lookout is spectacular! Hwy 3 between Hope and Princeton is one of the great motorcycle roads in BC.

Suggested by Gary J.



GT33 - Alpine Meadows Sign